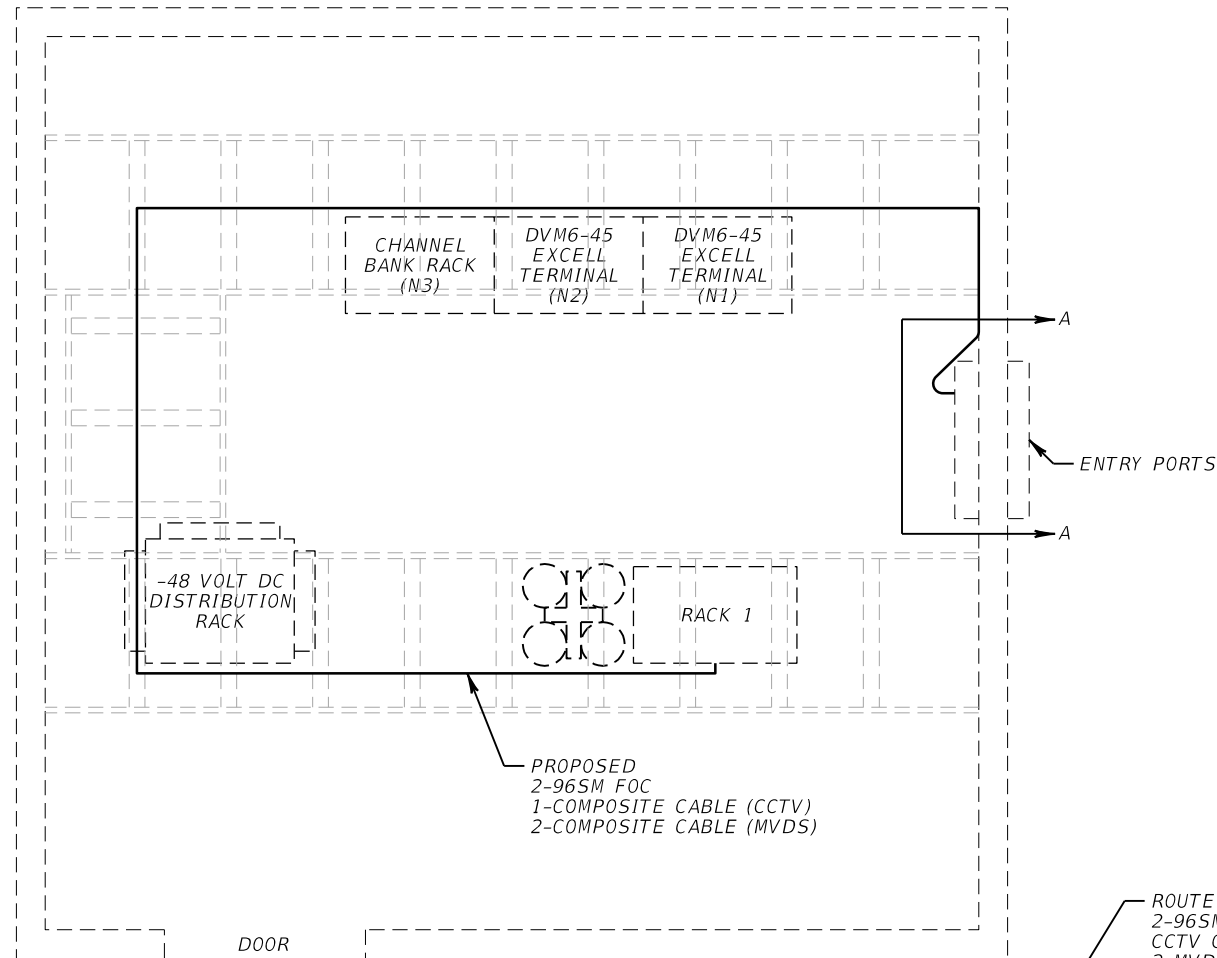


MICROWAVE TOWER  
FLOOR PLAN



PROPOSED  
2-96SM FOC  
1-COMPOSITE CABLE (CCTV)  
2-COMPOSITE CABLE (MVDS)

ROUTE PROPOSED  
2-96SM FOC  
CCTV COMPOSITE CABLE  
2-MVDS COMPOSITE CABLE  
ALONG VERTICAL CABLE RACK

PROPOSED  
2-VDC SPD  
FOR MVDS

PROPOSED  
2-96SM FOC

PROPOSED  
ETHERNET SPD  
24VAC SPD  
FOR CCTV

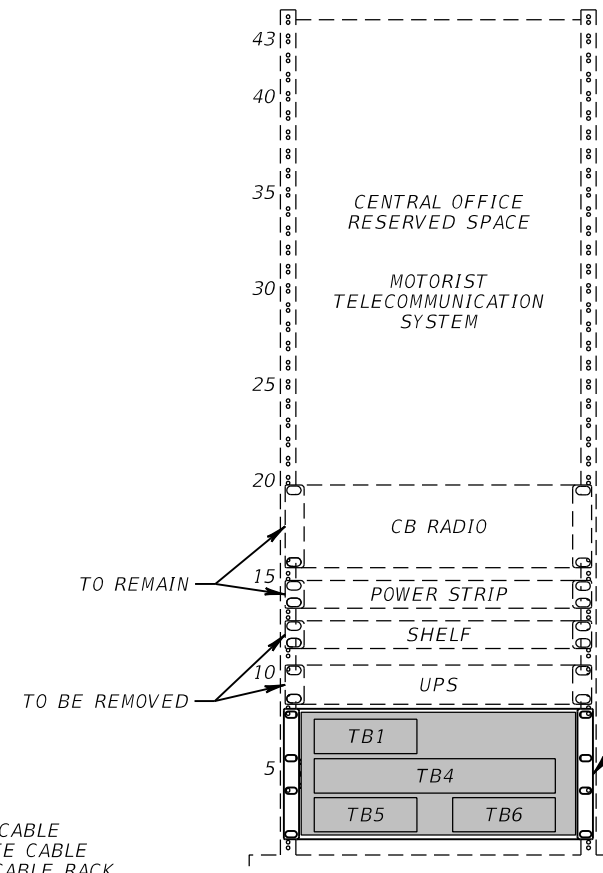
PROPOSED  
WALL MOUNTED  
DIN RAIL

PROPOSED  
CCTV COMPOSITE CABLE

PROPOSED  
2-MVDS COMPOSITE CABLE (REMOTE)

SECTION A-A

EXISTING RACK 1

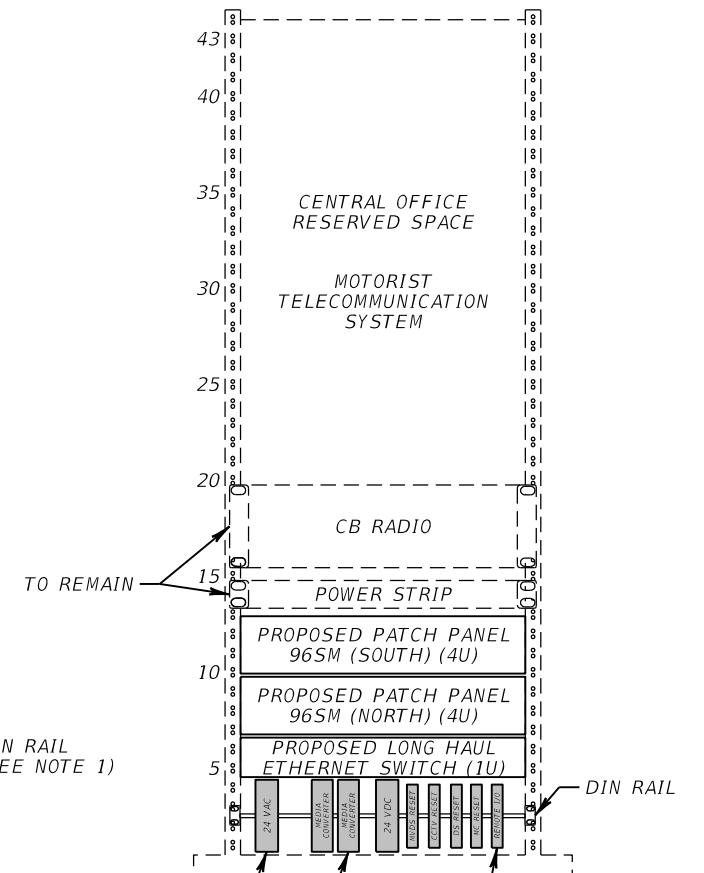


TO REMAIN

TO BE REMOVED

DIN RAIL  
(SEE NOTE 1)

PROPOSED RACK 1



TO REMAIN

PROPOSED  
24 VAC CCTV  
POWER SUPPLY

PROPOSED  
2-MEDIA CONVERTER  
FOR MVDS

PROPOSED  
24-VDC POWER SUPPLY  
MVDS RESET  
CCTV RESET  
DEVICE SERVER RESET  
MEDIA CONVERTER RESET  
REMOTE I/O

NOTE:

1. SEE WIRING DIAGRAMS FOR DETAILED WIRING SCHEMATIC

REVISIONS			
DATE	DESCRIPTION	DATE	DESCRIPTION

METRIC ENGINEERING, INC.  
ROBERT MASTASCUSA, P.E. # 66600  
615 CRESCENT EXECUTIVE CT  
SUITE 524  
LAKE MARY, FLORIDA 32746  
TEL. (407) 644-1898  
FAX. (407) 644-2376  
CERTIFICATE OF AUTHORIZATION 2294

STATE OF FLORIDA  
DEPARTMENT OF TRANSPORTATION

ROAD NO.	COUNTY	FINANCIAL PROJECT ID
SR 93	MARION	428213-2-52-02

EXISTING MICROWAVE  
TOWER DETAIL

SHEET  
NO.

IT-124