

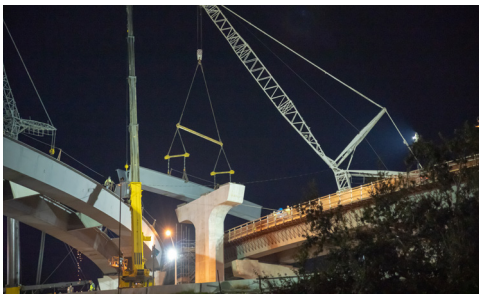


Florida Department of Transportation District Five Regional Transportation Management Center

I-4 Ultimate and the RTMC

Many in Central Florida stay alert to changes on I-4 Ultimate — the 21-mile reconstruction of Interstate 4 (I-4) through Orange and Seminole counties. But few do it more diligently than the operators at the Florida Department of Transportation's (FDOT) Regional Transportation Management Center (RTMC).

Twenty-four hours a day and seven days a week, RTMC operators monitor the impacts construction and other events have on traffic, and respond appropriately. Operators watch the work zone for the closing and opening of lanes, crashes or disabled vehicles, and debris on the roadway. They respond by dispatching Road Rangers, communicating with Florida Highway Patrol dispatchers, and posting information for drivers to overhead message boards and Florida 511.



When construction crews have to shut down I-4 completely (for example, to ensure safety during bridge work over the highway), operators implement Integrated Corridor Management plans with local city and county transportation operations staff to make sure detour routes can handle the additional vehicles. They coordinate with local transportation and law enforcement agencies, and use predefined traffic signal timings to minimize backups.

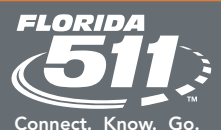
The vital relationship between I-4 — the transportation and economic backbone of Central Florida — and the RTMC — the hub of the region's transportation management system — is one reason the new RTMC, which also monitors interstates and other roadways in nine counties, is located within the I-4 corridor.

For more information on I-4 Ultimate, visit i4ultimate.com.



For roadside assistance,
call *FHP (*347) from your
mobile phone.

For more information, visit
CFLsmartroads.com





Florida Department of Transportation District Five Regional Transportation Management Center

Tech Update

FDOT is taking the opportunity during I-4 Ultimate construction to update the roadside technology along I-4. New traffic sensors and high-resolution traffic cameras will improve operators' ability to monitor conditions on I-4. Maintaining FDOT's fiber-optic network along I-4 is an important part of the construction project.



Managing the I-4 Express Lanes

When the I-4 Ultimate improvement project is complete, express lanes will provide new options on Interstate 4 (I-4) to help you get to where you're going.

To provide more predictable travel times for Central Florida drivers and manage traffic efficiently, two dynamically tolled express lanes are being added in each direction of I-4 from west of Kirkman Road (State Road 435) to east of State Road 434. With dynamic pricing, toll rates increase as the express lanes become more congested.

The RTMC will play an active role in monitoring traffic on I-4 and adjusting tolls accordingly in the express lanes. Roadside equipment will monitor real-time traffic conditions, and this information will be used to determine whether the toll increases or decreases to provide a better driving experience and help maintain traffic flow. The toll amount will be displayed on overhead electronic signs before each express lanes entrance so drivers have time to decide to use the express lanes or stay in the non-tolled general use lanes.

To learn more about I-4 Ultimate express lanes, visit i4ultimate.com/express-lanes.

EXPRESS LANES		
SUNPASS ONLY		
TO 435 Kirkman Rd		\$XX.XX
TO Kaley - Michigan		\$XX.XX
		\$XX.XX
\$25 PLUS TOLL FOR TOLL VIOLATION		



For roadside assistance,
call *FHP (*347) from your
mobile phone.

For more information, visit
CFLsmartroads.com

FLORIDA
511
Connect. Know. Go.