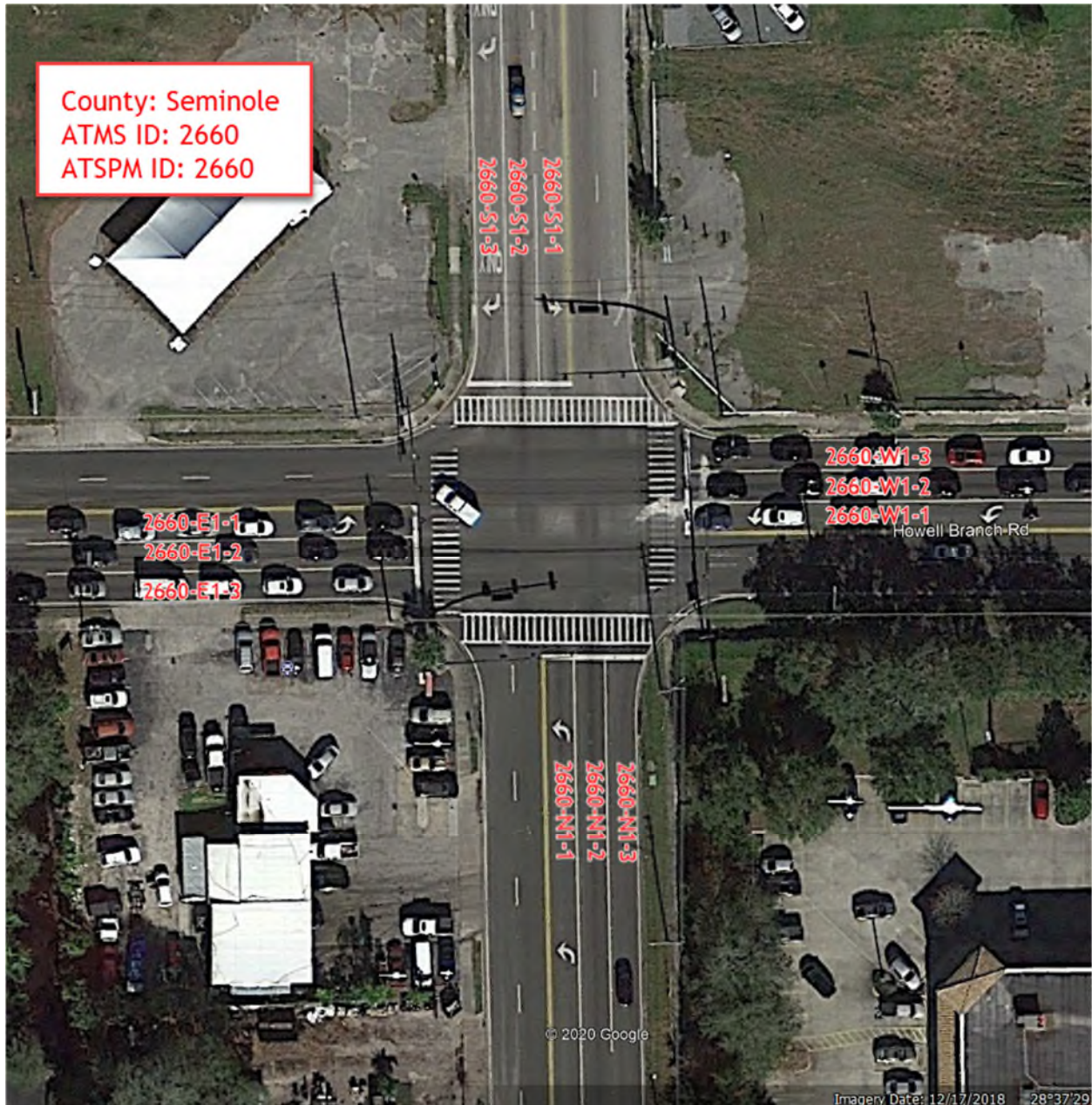


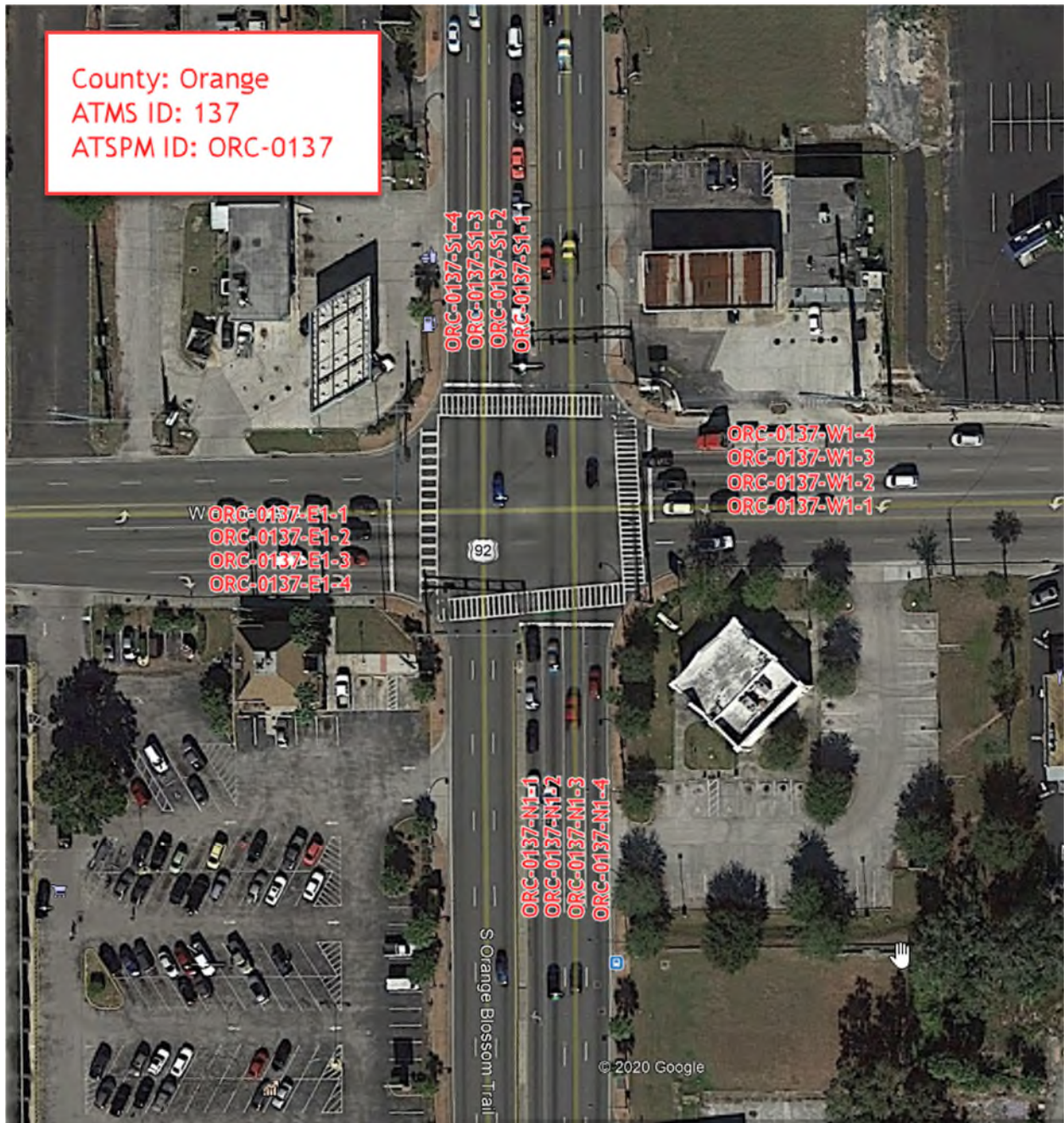
ITSIQA – IMC Naming Examples:

Note the ATSPM number ITSIQA uses is based off the traffic signal maintaining agency's ATMS ID number in a four digit as a zero-leading format. For example, controller 123 would have a Controller ID of 0123. Seminole County intersections only consist of a Four-Digit Controller ID.

Intersection: Howell Branch Rd at Lake Howell Rd

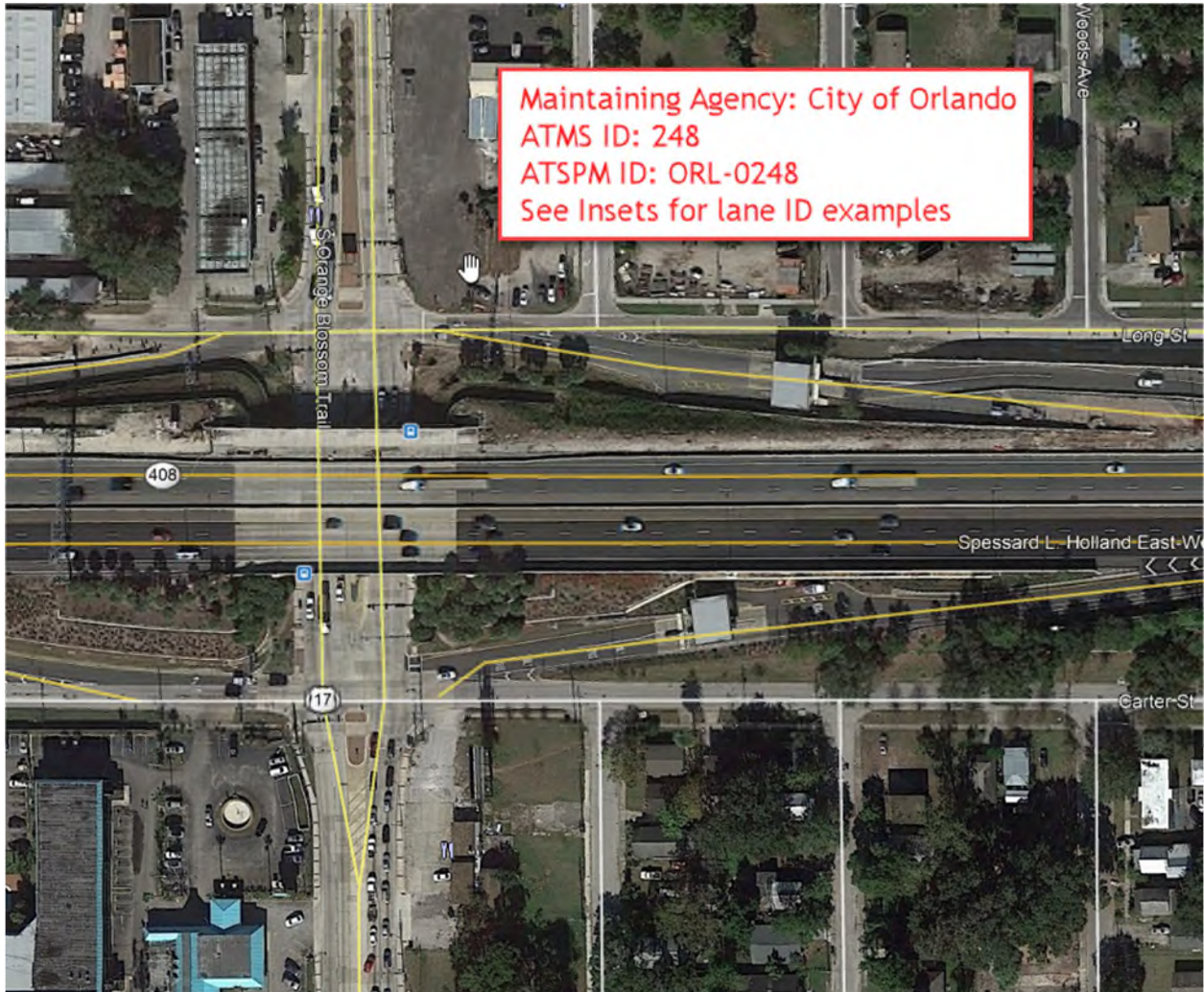


Intersection: Orange Blossom Trail at Holden Ave

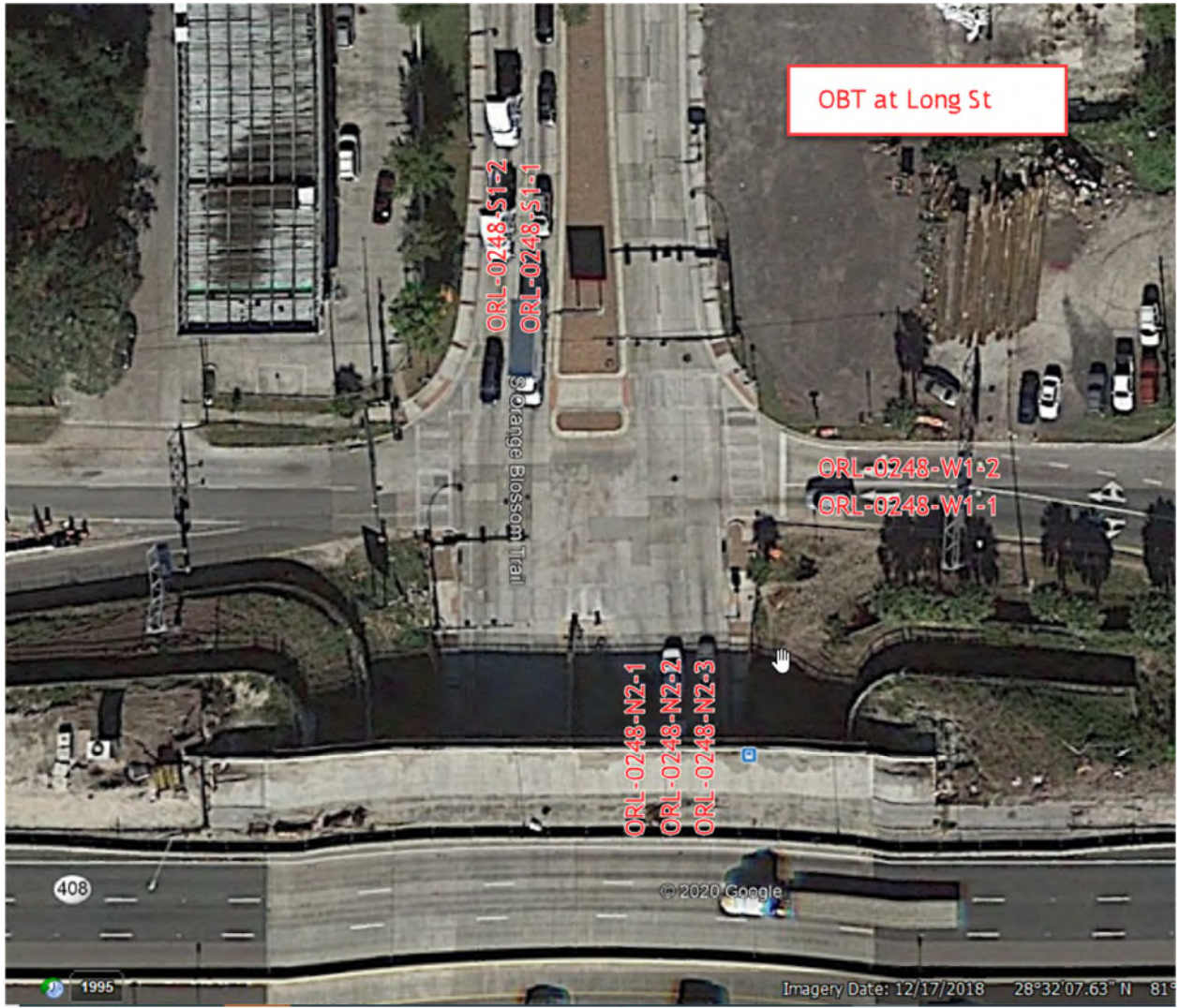


Intersection: Orange Blossom Trail at Carter St/Long St

Note that this example is for two one-way pair intersections that function off of the same traffic signal controller, so this shows an example of having multiple NB and SB approaches at one location.



Inset 1: Orange Blossom Trail at Long St



Inset 2: Orange Blossom Trail at Carter St

